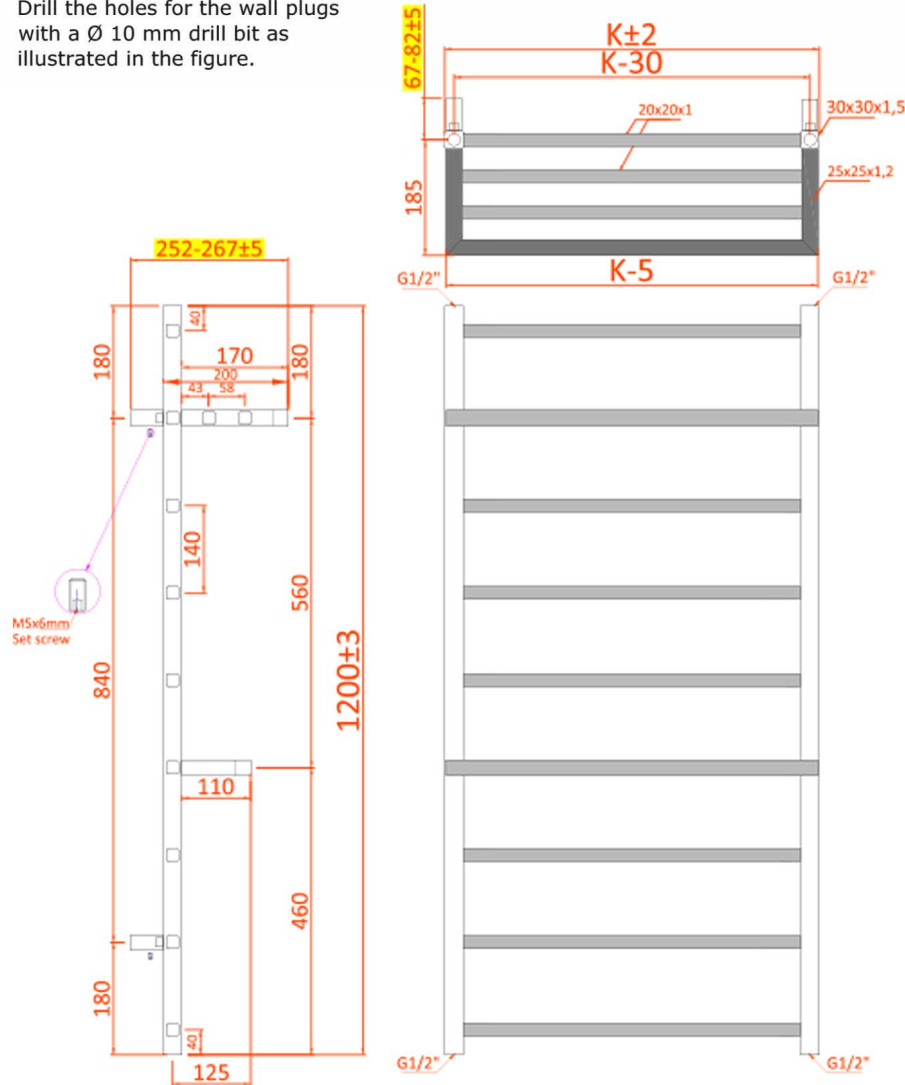


LAUNTON TOWEL RAIL

1

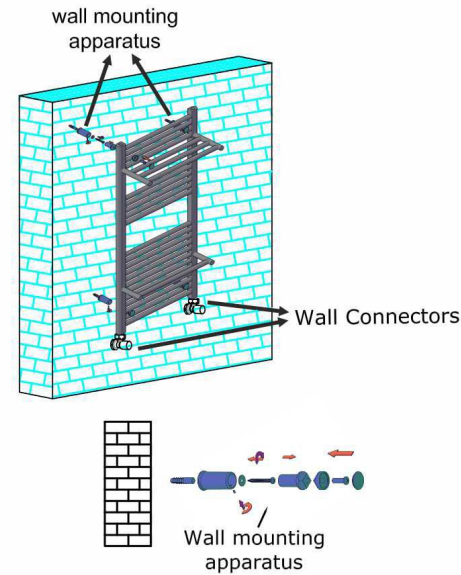
Drill the holes for the wall plugs with a \varnothing 10 mm drill bit as illustrated in the figure.



- We reserve to change any technical specification without prior notice.
 - This product is warranted against manufacturing defects and our liability under any guarantee is limited to repair or replacement of the defective product. The warranty is not transferrable.
 - Corrosion inhibitor must be added to the system regularly in order to maintain the warranty.
- * Radiator valves are not supplied with the radiators.

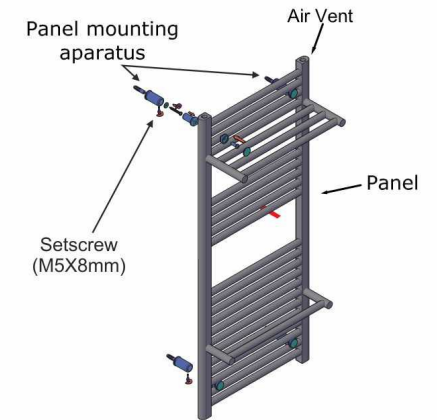
2

Fix the wall mounting apparatus on the wall as illustrated.



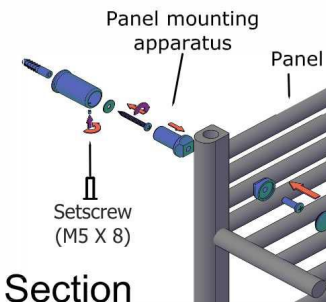
3

Fix the panel mounting apparatus to the back of the product as illustrated. Supplied washers must be used. Do not take off the edge and surface protective materials until all plumbing work is finished.



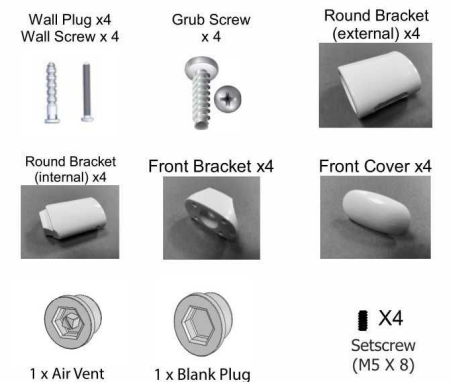
4

Hold the product carefully and put the panel mounting apparatus into the wall mounting apparatus and then fix it by tightening the bolts.



Cross Section

SUPPLIED INSTALLATION ACCESSORIES



PLEASE READ THIS INSTRUCTION THOROUGHLY BEFORE STARTING THE INSTALLATION

Our products are designed to be fitted by a fully qualified installer and in compliance with all relevant regulations.

- Eastbrook will not accept any liability for damage, injury or unsatisfactory performance if the product is not fitted by a fully qualified installer.
- **Max. Working pressure : 4 bar**

CONGRATULATIONS

You are the proud owner of an exclusive Launton Towel Rail which has been specially produced by our craftsmen who would wish you to enjoy many years of satisfaction from it.

INSTALLATION

This product must be installed by a fully qualified engineer.

- Please consider using an Eastbrook Valve Set – this will ensure that your radiator looks its best with matching radiator valves.
- On commissioning, flush the central heating system thoroughly using a proprietary solution to ensure that aggressive substances such as fluxes and manufacturing residue, from which internal surfaces of your radiator can sustain irreparable damage – are removed. It is further recommended that an appropriately approved corrosion inhibitor be subsequently added to the heating system to protect the radiator and other parts of the central heating system to promote extended operating lifespan. Please ensure, when adding inhibitor, not to underdose or overdose and follow the inhibitor instructions.

The Ph level of the system water should be between 6.5 and 7.5

If the system water is too acidic then the metals in the system would corrode. If the system water is too alkaline, then there is a higher risk of electrolysis.

- Make sure to use PTFE tape around the valve tails (not supplied with the radiator) before fitting on the radiator / towel rail. Flow and return can be either side at the bottom, for efficient water circulation and even heat on the radiator / towel rail surface, please arrange the inlet to be at the bottom opposite end of the bleed valve.
- Check that the wall is strong enough to hold the weight of the radiator / towel rail that will be filled with water. The supplied wall plugs & screws are only suitable for solid brick walls, not plasterboard walls.
- After fitting the valves, fill the system to check for leaks to ensure faultless installation.
- Run the central heating system and release any trapped air using the bleed valve on the radiator / towel rail.

MAINTENANCE

- From time to time, it is advisable to clean your towel rail with a warm damp cloth. Never use any form of abrasive cleaner or chemical.
- Corrosion inhibitor must also be regularly maintained, please consult your engineer for details.

IMPORTANT

Maximum working pressure of this radiator is 4 bar.

This radiator is to be used on Domestic Central Heating systems only. (Not suitable for use on direct hot water systems). Please consult your heating engineer or supplier.

WARRANTY

Your Launton Towel Rail is fully warranted for five years in respect of defective materials and workmanship and subject to installation being carried out by a qualified engineer in accordance with good practice and corrosion inhibitors being regularly maintained.

REMEMBER Excellence is worth looking after.